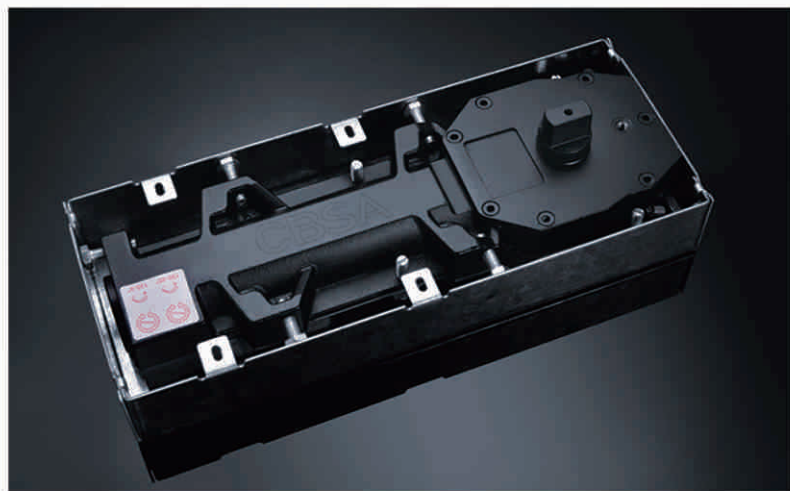


CBSA[®]

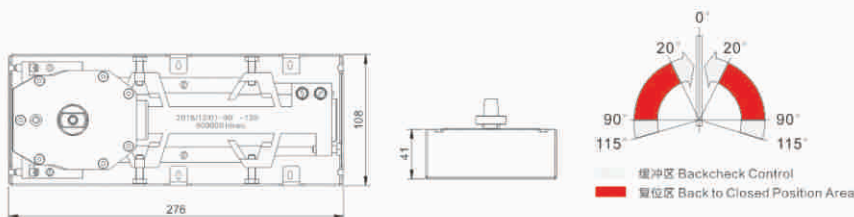
—— 西博國際 ——

GLASS DOOR HANDRAIL



S-65

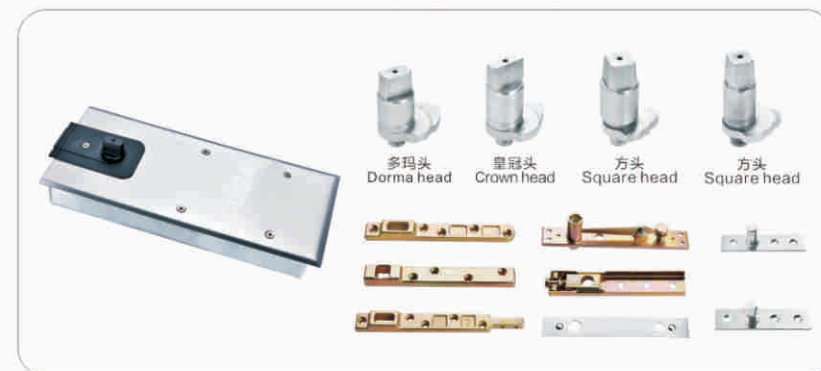
主要材质: 铸铁	Materials: Pressed iron
最大门重: $\leq 100\text{kg}$	Max door weight: $\leq 100\text{kg}$
最大门宽: $\leq 1000\text{mm}$	Max door width: $\leq 1000\text{mm}$
特性: 开合50万次无损	Feature: Switching for 500,000 times
适用范围: 塑钢门、木门、8~12mm钢化玻璃门	Available for: Steel and wooden doors, 8~12mm toughened glass door
主要功能: 门扇单向最大启135°, 双向90°及115° 双定位	Function: One way open at 135°, 90° and 115° two-way positioning



技术资料 Technical data

1. 我们采用优质防冻液压油, 确保在零下35℃地弹簧都能运作顺畅、灵活。
2. 地弹簧最大开启角度高达115度。
3. 我们提供90°定位功能或不定位功能。
4. 90度至0度两段速度调控阀, 以配合不同闭门效果。
5. 通用型设计, 适用于各种材质的门扇, 各种门均配有配套配件。
6. 特设可调式与不可调式地弹簧配件, 安装简易, 调整方便。

1. floor spring injected with high quality anti-freezing hydraulic oil, in order to ensure smooth and flexible operation of floor spring under -35℃
2. Max door opening angle 115°
3. The floor spring can provide 90° position function or non-positioning function.
4. There are two speed adjustment valves.
5. Universal design for doors of all materials, all with accessories
6. There are adjustable and non-adjustable floor spring accessories for easy installation and easy adjustment.

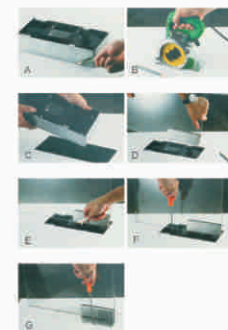


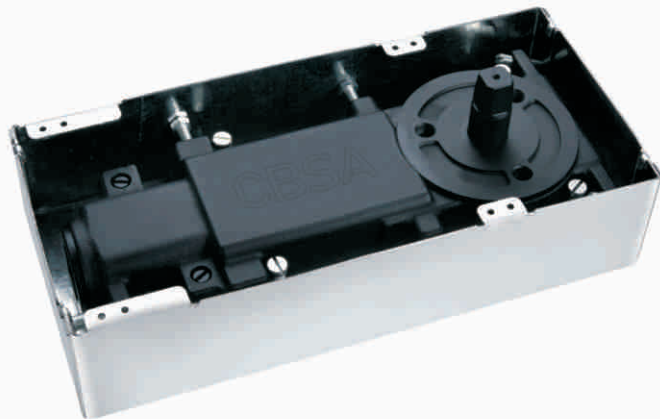
地弹簧安装步骤:

- A 画线, 使地弹簧转轴中心与门夹转轴重合。
- B 根据说明书和实物在地面开孔, 孔的大小要与地弹簧壳体配套, 不能松动。
- C 将地弹簧放入开好的孔内, 校正。
- D 抬起装好的门夹的门扇, 使地弹簧的转轴插入门扇的转动轴孔内。
- E 调节地弹簧三个方向的螺丝, 保持门扇垂直, 及上下转动轴心重合。
- F 调节关门的速度。
- G 盖上地弹簧装饰盖。

Floor Spring installation steps:

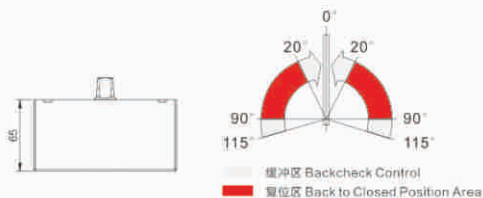
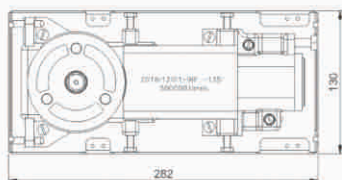
- A. Draw the line to make the floor spring spin axis center coincide with the patch fitting rotation shaft
- B. According to the instructions and the physical object digging the hole on the ground, the hole size must be tightly consistent with the cement box.
- C. Put the floor spring into the hole.
- D. Lift the door leaf installed with the patch fitting, and insert the floor spring cam into the patch fitting rotation shaft hole.
- E. Adjust the screws in the three directions of the ground spring to keep the door leaf vertical and the upper and lower axes coincide with each other.
- F. Adjust the speed of door closing.
- G. Put the decoration cover on the floor spring.





S-25D

主要材质: 铸铁	Materials: Pressed iron
最大门重: $\leq 200\text{kg}$	Max door weight: $\leq 200\text{kg}$
最大门宽: $\leq 1500\text{mm}$	Max door width: $\leq 1500\text{mm}$
特性: 开合50万次无损	Feature: Switching for 500,000 times
适用范围: 塑钢门、木门、8~12mm钢化玻璃门	Available for: Steel and wooden doors, 8~12 toughened glass door
主要功能: 门扇单向最大启135°, 双向90°及115° 双定位	Function: One way open at 135°, 90° and 115° two-way positioning



技术资料 Technical data

1. 我们采用优质防冻液压油, 确保在零下35℃地弹簧都能运作顺畅、灵活。
2. 地弹簧最大开启角度高达115°。
3. 我们提供90°定位功能或不定位功能。
4. 90°至0°两段速度调控阀, 以配合不同闭门效果。
5. 通用型设计, 适用于各种材质的门扇, 各种门均备有配套配件。
6. 特设可调式与不可调式地弹簧配件, 安装简易, 调整方便。

1. floor spring injected with high quality anti-freezing hydraulic oil, in order to ensure smooth and flexible operation of floor spring under -35°C
2. Max door opening angle 115°
3. The floor spring can provide 90° position function or non-positioning function.
4. There are two speed adjustment valves.
5. Universal design for doors of all materials, all with accessories
6. There are adjustable and non-adjustable floor spring accessories for easy installation and easy adjustment.



地弹簧安装步骤:

- A 画线, 使地弹簧转轴中心与门夹转轴重合。
- B 根据说明书和实物在地面开孔, 孔的大小要与地弹簧壳体配紧, 不能松动。
- C 将地弹簧放入开好的孔内, 校正。
- D 抬起装好的门夹的门扇, 使地弹簧的转轴插入门扇的转动轴孔内。
- E 调节地弹簧三个方向的螺丝, 保持门扇垂直, 及上下转动轴心重合。
- F 调节关门的速度。
- G 盖上地弹簧装饰盖。

Floor Spring installaion steps:

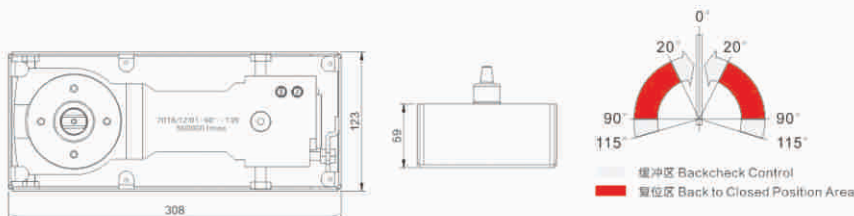
- A. Draw the line to make the floor spring spin axis center coincide with the patch fitting rotation shaft
- B. According to the instructions and the physical object digging the hole on the ground, the hole size must be tightly consistent with the cement box.
- C. Put the floor spring into the hole.
- D. Lift the door leaf installed with the patch fitting, and insert the floor spring cam into the patch fitting rotation shaft hole.
- E. Adjust the screws in the three directions of the ground spring to keep the door leaf vertical and the upper and lower axes coincide with each other.
- F. Adjust the speed of door closing.
- G. Put the decoration cover on the floor spring.





S-2400

主要材质: 铸铁	Materials: Pressed iron
最大门重: ≤300kg	Max door weight: ≤300kg
最大门宽: ≤1500mm	Max door width: ≤1500mm
特性: 开合50万次无损	Feature: Switching for 500,000 times
适用范围: 塑钢门、木门、8~12mm钢化玻璃门	Available for: Steel and wooden doors, 8~12 toughened glass door
主要功能: 门扇单向最大启135°, 双向90°及115° 双定位	Function: One way open at 135°, 90° and 115° two-way positioning



技术资料 Technical data

1. 我们采用优质防冻液压油, 确保在零下35℃地弹簧都能运作顺畅、灵活。
2. 地弹簧最大开启角度高达115度。
3. 我们提供90°定位功能或不定位功能。
4. 90度至0度两段速度调控阀, 以配合不同闭门效果。
5. 通用型设计, 适用于各种材质的门扇, 各种门均备有配套配件。
6. 特设可调式与不可调式地弹簧配件, 安装简易, 调整方便。

1. floor spring injected with high quality anti-freezing hydraulic oil, in order to ensure smooth and flexible operation of floor spring under -35℃
2. Max door opening angle 115°
3. The floor spring can provide 90° position function or non-positioning function.
4. There are two speed adjustment valves.
5. Universal design for doors of all materials, all with accessories
6. There are adjustable and non-adjustable floor spring accessories for easy installation and easy adjustment.

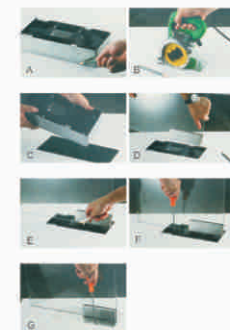


地弹簧安装步骤:

- A 画线, 使地弹簧转轴中心与门夹转轴重合。
- B 根据说明书和实物在地面开孔, 孔的大小要与地弹簧壳体配紧, 不能松动。
- C 将地弹簧放入开好的孔内, 校正。
- D 抬起装好的门夹的门扇, 使地弹簧的转轴插入门扇的转动轴孔内。
- E 调节地弹簧三个方向的螺丝, 保持门扇垂直, 及上下转动轴心重合。
- F 调节关门的速度。
- G 盖上地弹簧装饰盖。

Floor Spring installaion steps:

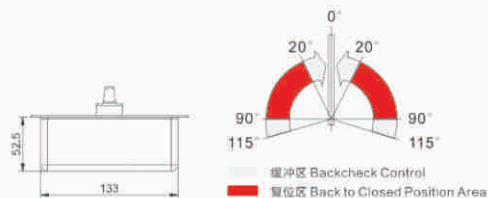
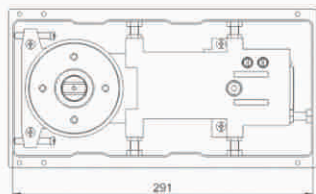
- A. Draw the line to make the floor spring spin axis center coincide with the patch fitting rotation shaft
- B. According to the instructions and the physical object digging the hole on the ground, the hole size must be tightly consistent with the cement box.
- C. Put the floor spring into the hole.
- D. Lift the door leaf installed with the patch fitting, and insert the floor spring cam into the patch fitting rotation shaft hole.
- E. Adjust the screws in the three directions of the ground spring to keep the door leaf vertical and the upper and lower axes coincide with each other.
- F. Adjust the speed of door closing.
- G. Put the decoration cover on the floor spring.





S-8300

主要材质: 铸铁	Materials: Pressed iron
最大门重: $\leq 150\text{kg}$	Max door weight: $\leq 150\text{kg}$
最大门宽: $\leq 1100\text{mm}$	Max door width: $\leq 1100\text{mm}$
特性: 开合50万次无损	Feature: Switching for 500,000 times
适用范围: 塑钢门、木门、8~12mm钢化玻璃门	Available for: Steel and wooden doors, 8~12 toughened glass door
主要功能: 门扇单向最大启135°, 双向90°及115° 双定位	Function: One way open at 135°, 90° and 115° two-way positioning



技术资料 Technical data

1. 我们采用优质防冻液压油, 确保在零下35℃地弹簧都能运作顺畅、灵活。
2. 地弹簧最大开启角度高达115度。
3. 我们提供90°定位功能或不定位功能。
4. 90度至0度两段速度调控阀, 以配合不同闭门效果。
5. 通用型设计, 适用于各种材质的门扇, 各种门均配有配套配件。
6. 特设可调式与不可调式地弹簧配件, 安装简易, 调整方便。

1. floor spring injected with high quality anti-freezing hydraulic oil, in order to ensure smooth and flexible operation of floor spring under -35℃
2. Max door opening angle 115°
3. The floor spring can provide 90° position function or non-positioning function.
4. There are two speed adjustment valves.
5. Universal design for doors of all materials, all with accessories
6. There are adjustable and non-adjustable floor spring accessories for easy installation and easy adjustment.



地弹簧安装步骤:

- A 画线, 使地弹簧转轴中心与门夹转轴重合。
- B 根据说明书和实物在地面开孔, 孔的大小要与地弹簧壳体配套, 不能松动。
- C 将地弹簧放入开好的孔内, 校正。
- D 抬起装好的门夹的门扇, 使地弹簧的转轴插入门扇的转动轴孔内。
- E 调节地弹簧三个方向的螺丝, 保持门扇垂直, 及上下转动轴心重合。
- F 调节关门的速度。
- G 盖上地弹簧装饰盖。

Floor Spring installaion steps:

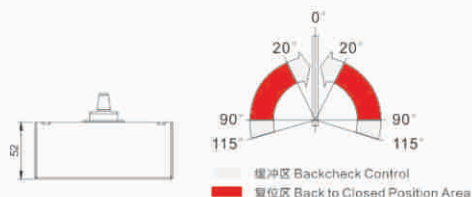
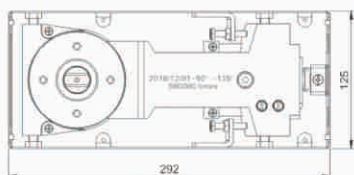
- A. Draw the line to make the floor spring spin axis center coincide with the patch fitting rotation shaft
- B. According to the instructions and the physical object digging the hole on the ground, the hole size must be tightly consistent with the cement box.
- C. Put the floor spring into the hole.
- D. Lift the door leaf installed with the patch fitting, and insert the floor spring cam into the patch fitting rotation shaft hole.
- E. Adjust the screws in the three directions of the ground spring to keep the door leaf vertical and the upper and lower axes coincide with each other.
- F. Adjust the speed of door closing.
- G. Put the decoration cover on the floor spring.





S-830

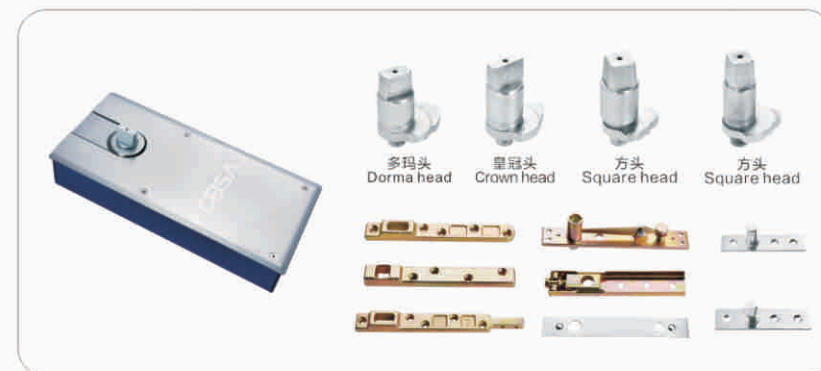
主要材质: 铸铁	Materials: Pressed iron
最大门重: $\leq 130\text{kg}$	Max door weight: $\leq 130\text{kg}$
最大门宽: $\leq 1000\text{mm}$	Max door width: $\leq 1000\text{mm}$
特性: 开合50万次无损	Feature: Switching for 500,000 times
适用范围: 塑钢门、木门、8~12mm钢化玻璃门	Available for: Steel and wooden doors, 8~12 toughened glass door
主要功能: 门扇单向最大启135°, 双向90°及115°双定位	Function: One way open at 135°, 90° and 115° two-way positioning



技术资料 Technical data

1. 我们采用优质防冻液压油, 确保在零下35℃地弹簧都能运作顺畅、灵活。
2. 地弹簧最大开启角度高达115度。
3. 我们提供90°定位功能或不定位功能。
4. 90度至0度两段速度调控阀, 以配合不同闭门效果。
5. 通用型设计, 适用于各种材质的门扇, 各种门均配有配套配件。
6. 特设可调式与不可调式地弹簧配件, 安装简易, 调整方便。

1. floor spring injected with high quality anti-freezing hydraulic oil, in order to ensure smooth and flexible operation of floor spring under -35℃
2. Max door opening angle 115°
3. The floor spring can provide 90° position function or non-positioning function.
4. There are two speed adjustment valves.
5. Universal design for doors of all materials, all with accessories
6. There are adjustable and non-adjustable floor spring accessories for easy installation and easy adjustment.

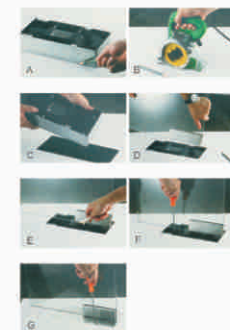


地弹簧安装步骤:

- A 画线, 使地弹簧转轴中心与门夹转轴重合。
- B 根据说明书和实物在地面开孔, 孔的大小要与地弹簧壳体配紧, 不能松动。
- C 将地弹簧放入开好的孔内, 校正。
- D 抬起装好的门夹的门扇, 使地弹簧的转轴插入门扇的转动轴孔内。
- E 调节地弹簧三个方向的螺丝, 保持门扇垂直, 及上下转动轴心重合。
- F 调节关门的速度。
- G 盖上地弹簧装饰盖。

Floor Spring installation steps:

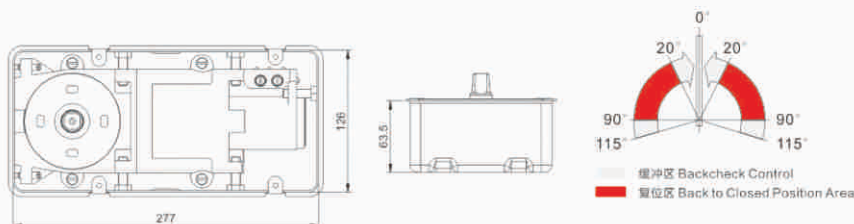
- A. Draw the line to make the floor spring spin axis center coincide with the patch fitting rotation shaft
- B. According to the instructions and the physical object digging the hole on the ground, the hole size must be tightly consistent with the cement box.
- C. Put the floor spring into the hole.
- D. Lift the door leaf installed with the patch fitting, and insert the floor spring cam into the patch fitting rotation shaft hole.
- E. Adjust the screws in the three directions of the ground spring to keep the door leaf vertical and the upper and lower axes coincide with each other.
- F. Adjust the speed of door closing.
- G. Put the decoration cover on the floor spring.





S-7300

主要材质: 铸铁	Materials: Pressed iron
最大门重: ≤250kg	Max door weight: ≤250kg
最大门宽: ≤1500mm	Max door width: ≤1500mm
特性: 开合50万次无损	Feature: Switching for 500,000 times
适用范围: 钢门、木门、8~12mm钢化玻璃门	Available for: Steel and wooden doors, 8~12 toughened glass door
主要功能: 门扇单向最大启135°, 双向90°及115° 双定位	Function: One way open at 135°, 90° and 115° two-way positioning



技术资料 Technical data

1. 我们采用优质防冻液压油, 确保在零下35℃地弹簧都能运作顺畅、灵活。
2. 地弹簧最大开启角度高达115度。
3. 我们提供90°定位功能或不定位功能。
4. 90度至0度两段速度调控阀, 以配合不同闭门效果。
5. 通用型设计, 适用于各种材质的门扇, 各种门均配有配套配件。
6. 特设可调式与不可调式地弹簧配件, 安装简易, 调整方便。

1. floor spring injected with high quality anti-freezing hydraulic oil, in order to ensure smooth and flexible operation of floor spring under -35℃
2. Max door opening angle 115°
3. The floor spring can provide 90° position function or non-positioning function.
4. There are two speed adjustment valves.
5. Universal design for doors of all materials, all with accessories
6. There are adjustable and non-adjustable floor spring accessories for easy installation and easy adjustment.

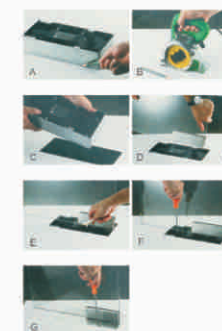


地弹簧安装步骤:

- A 画线, 使地弹簧转轴中心与门夹转轴重合。
- B 根据说明书和实物在地面开孔, 孔的大小要与地弹簧壳体配套, 不能松动。
- C 将地弹簧放入开好的孔内, 校正。
- D 抬起装好的门夹的门扇, 使地弹簧的转轴插入门扇的转动轴孔内。
- E 调节地弹簧三个方向的螺丝, 保持门扇垂直, 及上下转动轴心重合。
- F 调节关门的速度。
- G 盖上地弹簧装饰盖。

Floor Spring installaion steps:

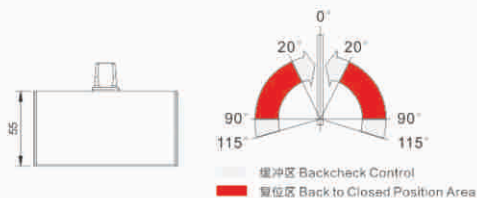
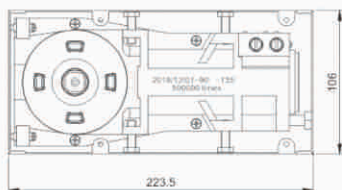
- A. Draw the line to make the floor spring spin axis center coincide with the patch fitting rotation shaft
- B. According to the instructions and the physical object digging the hole on the ground, the hole size must be tightly consistent with the cement box.
- C. Put the floor spring into the hole.
- D. Lift the door leaf installed with the patch fitting, and insert the floor spring cam into the patch fitting rotation shaft hole.
- E. Adjust the screws in the three directions of the ground spring to keep the door leaf vertical and the upper and lower axes coincide with each other.
- F. Adjust the speed of door closing.
- G. Put the decoration cover on the floor spring.





S-7100

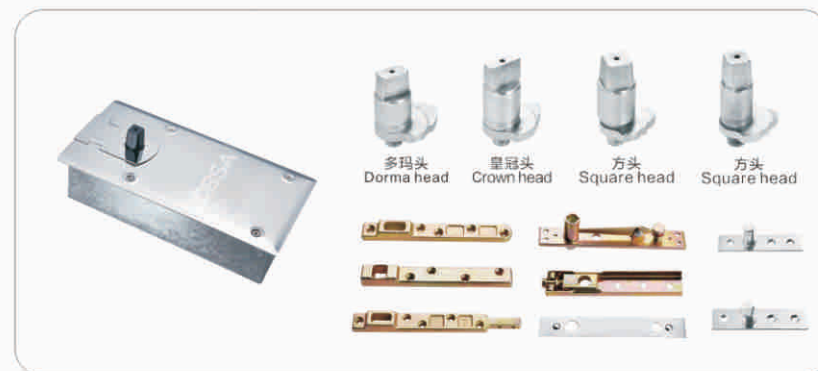
主要材质: 铸铁	Materials: Pressed iron
最大门重: ≤80kg	Max door weight: ≤80kg
最大门宽: ≤800mm	Max door width: ≤800mm
特性: 开合50万次无损	Feature: Switching for 500,000 times
适用范围: 塑钢门、木门、8~12mm钢化玻璃门	Available for: Steel and wooden doors, 8~12mm toughened glass door
主要功能: 门扇单向最大启135°, 变向90°及115°双定位	Function: One way open at 135°, 90° and 115° two-way positioning



技术资料 Technical data

1. 我们采用优质防冻液压油, 确保在零下35℃地弹簧都能运作顺畅、灵活。
2. 地弹簧最大开启角度高达115度。
3. 我们提供90°定位功能或不定位功能。
4. 90度至0度两段速度调控, 以配合不同闭门效果。
5. 通用型设计, 适用于各种材质的门扇, 各种门均配有配套配件。
6. 特设可调式与不可调式地弹簧配件, 安装简易, 调整方便。

1. floor spring injected with high quality anti-freezing hydraulic oil, in order to ensure smooth and flexible operation of floor spring under -35℃
2. Max door opening angle 115°
3. The floor spring can provide 90° position function or non-positioning function.
4. There are two speed adjustment valves.
5. Universal design for doors of all materials, all with accessories
6. There are adjustable and non-adjustable floor spring accessories for easy installation and easy adjustment.



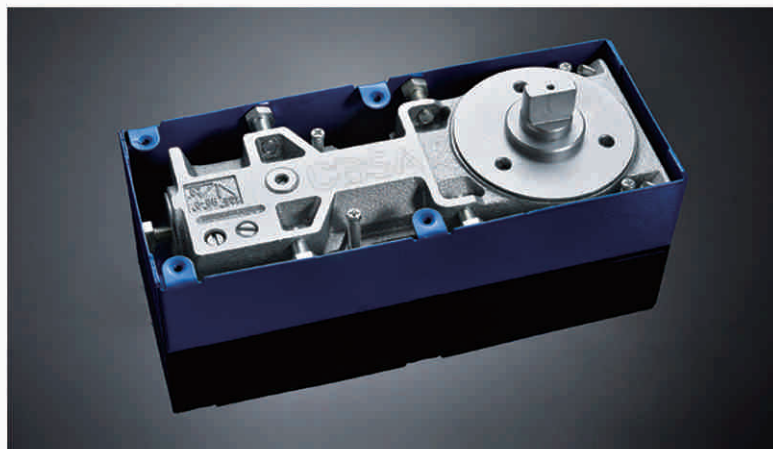
地弹簧安装步骤:

- A 画线, 使地弹簧转轴中心与门夹转轴重合。
- B 根据说明书和实物在地面开孔, 孔的大小要与地弹簧壳体配套, 不能松动。
- C 将地弹簧放入开好的孔内, 校正。
- D 抬起装好的门夹的门扇, 使地弹簧的转轴插入门扇的转动轴孔内。
- E 调节地弹簧三个方向的螺丝, 保持门扇垂直, 及上下转动轴心重合。
- F 调节关门的速度。
- G 盖上地弹簧装饰盖。

Floor Spring installaion steps:

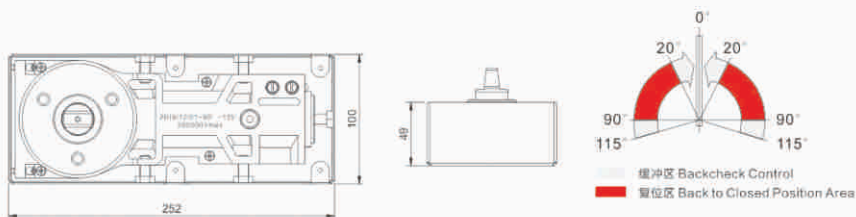
- A. Draw the line to make the floor spring spin axis center coincide with the patch fitting rotation shaft
- B. According to the instructions and the physical object digging the hole on the ground, the hole size must be tightly consistent with the cement box.
- C. Put the floor spring into the hole.
- D. Lift the door leaf installed with the patch fitting, and insert the floor spring cam into the patch fitting rotation shaft hole.
- E. Adjust the screws in the three directions of the ground spring to keep the door leaf vertical and the upper and lower axes coincide with each other.
- F. Adjust the speed of door closing.
- G. Put the decoration cover on the floor spring.





S-220

主要材质: 铸铁	Materials: Pressed iron
最大门重: ≤80kg	Max door weight: ≤80kg
最大门宽: ≤900mm	Max door width: ≤900mm
特性: 开合50万次无损	Feature: Switching for 500,000 times
适用范围: 塑钢门、木门、8~12mm钢化玻璃门	Available for: Steel and wooden doors, 8~12 toughened glass door
主要功能: 门扇单向最大启135°, 双向90°及115° 双定位	Function: One way open at 135°, 90° and 115° two-way positioning



技术资料 Technical data

1. 我们采用优质防冻液压油, 确保在零下35℃地弹簧都能运作顺畅、灵活。
2. 地弹簧最大开启角度高达115度。
3. 我们提供90°定位功能或不定位功能。
4. 90度至0度两段速度调控阀, 以配合不同闭门效果。
5. 通用型设计, 适用于各种材质的门扇, 各种门均配有配套配件。
6. 特设可调式与不可调式地弹簧配件, 安装简易, 调整方便。

1. floor spring injected with high quality anti-freezing hydraulic oil, in order to ensure smooth and flexible operation of floor spring under -35℃
2. Max door opening angle 115°
3. The floor spring can provide 90° position function or non-positioning function.
4. There are two speed adjustment valves.
5. Universal design for doors of all materials, all with accessories
6. There are adjustable and non-adjustable floor spring accessories for easy installation and easy adjustment.

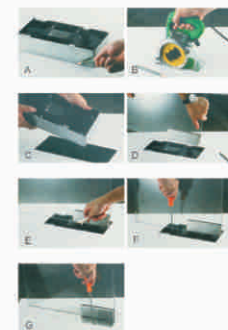


地弹簧安装步骤:

- A 画线, 使地弹簧转轴中心与门夹转轴重合。
- B 根据说明书和实物在地面开孔, 孔的大小要与地弹簧壳体配套, 不能松动。
- C 将地弹簧放入开好的孔内, 校正。
- D 抬起装好的门夹的门扇, 使地弹簧的转轴插入门扇的转动轴孔内。
- E 调节地弹簧三个方向的螺丝, 保持门扇垂直, 及上下转动轴心重合。
- F 调节关门的速度。
- G 盖上地弹簧装饰盖。

Floor Spring installaion steps:

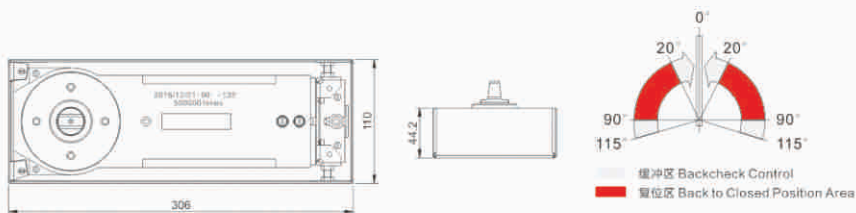
- A. Draw the line to make the floor spring spin axis center coincide with the patch fitting rotation shaft
- B. According to the instructions and the physical object digging the hole on the ground, the hole size must be tightly consistent with the cement box.
- C. Put the floor spring into the hole.
- D. Lift the door leaf installed with the patch fitting, and insert the floor spring cam into the patch fitting rotation shaft hole.
- E. Adjust the screws in the three directions of the ground spring to keep the door leaf vertical and the upper and lower axes coincide with each other.
- F. Adjust the speed of door closing.
- G. Put the decoration cover on the floor spring.





S-8400

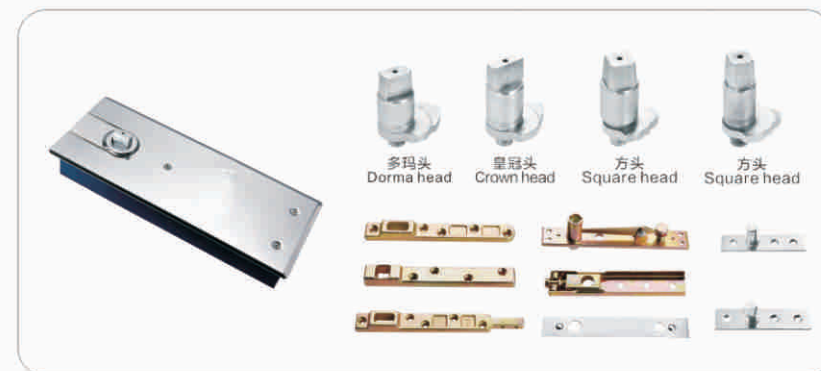
主要材质: 铸铁	Materials: Pressed iron
最大门重: ≤150kg	Max door weight: ≤150kg
最大门宽: ≤1200mm	Max door width: ≤1200mm
特性: 开合50万次无损	Feature: Switching for 500,000 times
适用范围: 钢门、木门、8~12mm钢化玻璃门	Available for: Steel and wooden doors, 8~12mm toughened glass door
主要功能: 门扇单向最大开启135°, 双向90°及115°双定位	Function: One way open at 135°, 90° and 115° two-way positioning



技术资料 Technical data

1. 我们采用优质防冻液压油, 确保在零下35℃地弹簧都能运作顺畅、灵活。
2. 地弹簧最大开启角度高达115°。
3. 我们提供90°定位功能或不定位功能。
4. 90°至0°底两段速度调控阀, 以配合不同闭门效果。
5. 通用型设计, 适用于各种材质的门扇, 各种门均配有配套配件。
6. 特设可调式与不可调式地弹簧配件, 安装简易, 调整方便。

1. floor spring injected with high quality anti-freezing hydraulic oil, in order to ensure smooth and flexible operation of floor spring under -35℃
2. Max door opening angle 115°
3. The floor spring can provide 90° position function or non-positioning function.
4. There are two speed adjustment valves.
5. Universal design for doors of all materials, all with accessories
6. There are adjustable and non-adjustable floor spring accessories for easy installation and easy adjustment.

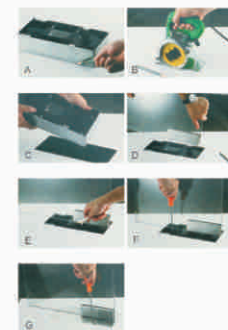


地弹簧安装步骤:

- A 画线, 使地弹簧转轴中心与门夹转轴重合。
- B 根据说明书和实物在地面开孔, 孔的大小要与地弹簧壳体配套, 不能松动。
- C 将地弹簧放入开好的孔内, 校正。
- D 抬起装好的门夹的门扇, 使地弹簧的转轴插入门扇的转动轴孔内。
- E 调节地弹簧三个方向的螺丝, 保持门扇垂直, 及上下转动轴心重合。
- F 调节关门的速度。
- G 盖上地弹簧装饰盖。

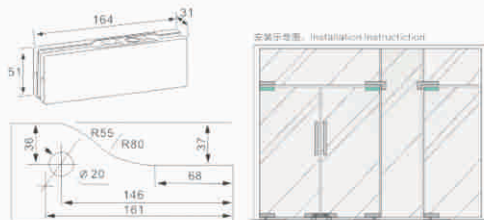
Floor Spring installation steps:

- A. Draw the line to make the floor spring spin axis center coincide with the patch fitting rotation shaft
- B. According to the instructions and the physical object digging the hole on the ground, the hole size must be tightly consistent with the cement box.
- C. Put the floor spring into the hole.
- D. Lift the door leaf installed with the patch fitting, and insert the floor spring cam into the patch fitting rotation shaft hole.
- E. Adjust the screws in the three directions of the ground spring to keep the door leaf vertical and the upper and lower axes coincide with each other.
- F. Adjust the speed of door closing.
- G. Put the decoration cover on the floor spring.



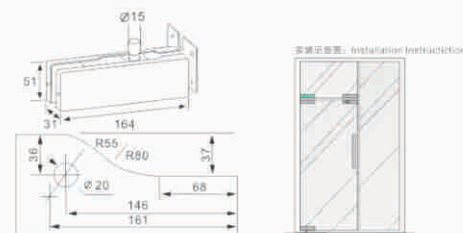
S-010

适合门厚:10-12mm Door thickness:10-12mm
主要材质:铝合金、不锈钢 Main material:Aluminum alloy/stainless steel
表面处理:亮光、砂光、钛金 Finish:Polished/Satin/Titanium



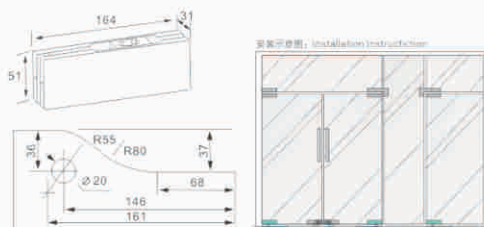
S-040

适合门厚:10-12mm Door thickness:10-12mm
主要材质:铝合金、不锈钢 Main material:Aluminum alloy/stainless steel
表面处理:亮光、砂光、钛金 Finish:Polished/Satin/Titanium



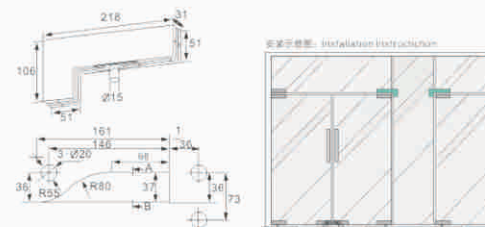
S-020

适合门厚:10-12mm Door thickness:10-12mm
主要材质:铝合金、不锈钢 Main material:Aluminum alloy/stainless steel
表面处理:亮光、砂光、钛金 Finish:Polished/Satin/Titanium



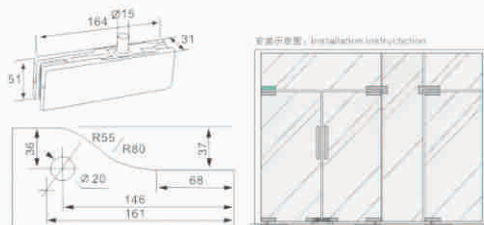
S-050

适合门厚:10-12mm Door thickness:10-12mm
主要材质:铝合金、不锈钢 Main material:Aluminum alloy/stainless steel
表面处理:亮光、砂光、钛金 Finish:Polished/Satin/Titanium



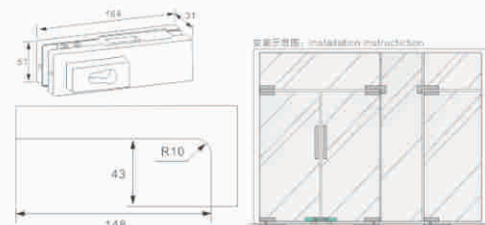
S-030

适合门厚:10-12mm Door thickness:10-12mm
主要材质:铝合金、不锈钢 Main material:Aluminum alloy/stainless steel
表面处理:亮光、砂光、钛金 Finish:Polished/Satin/Titanium



S-060

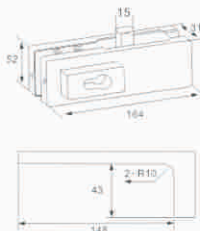
适合门厚:10-12mm Door thickness:10-12mm
主要材质:铝合金、不锈钢 Main material:Aluminum alloy/stainless steel
表面处理:亮光、砂光、钛金 Finish:Polished/Satin/Titanium





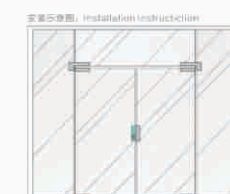
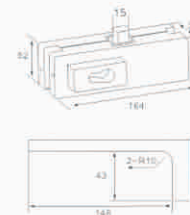
S-070

适合门厚:10-12mm Door thickness:10-12mm
主要材质:铝合金、不锈钢 Main material:Aluminum alloy/stainless steel
表面处理:亮光、砂光、钛金 Finish:Polished/Satin/Titanium



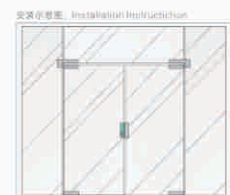
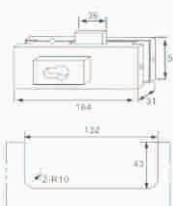
S-011

适合门厚:10-12mm Door thickness:10-12mm
主要材质:铝合金、不锈钢 Main material:Aluminum alloy/stainless steel
表面处理:亮光、砂光、钛金 Finish:Polished/Satin/Titanium



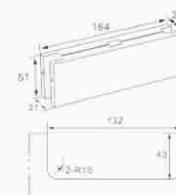
S-080

适合门厚:10-12mm Door thickness:10-12mm
主要材质:铝合金、不锈钢 Main material:Aluminum alloy/stainless steel
表面处理:亮光、砂光、钛金 Finish:Polished/Satin/Titanium



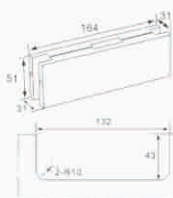
S-012

适合门厚:10-12mm Door thickness:10-12mm
主要材质:铝合金、不锈钢 Main material:Aluminum alloy/stainless steel
表面处理:亮光、砂光、钛金 Finish:Polished/Satin/Titanium



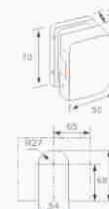
S-090

适合门厚:10-12mm Door thickness:10-12mm
主要材质:铝合金、不锈钢 Main material:Aluminum alloy/stainless steel
表面处理:亮光、砂光、钛金 Finish:Polished/Satin/Titanium



S-014

适合门厚:10-12mm Door thickness:10-12mm
主要材质:铝合金、不锈钢 Main material:Aluminum alloy/stainless steel
表面处理:亮光、砂光、钛金 Finish:Polished/Satin/Titanium





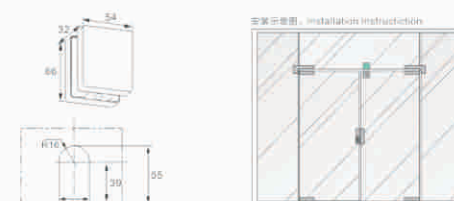
S-015

适合门厚:10-12mm Door thickness:10-12mm
主要材质:铝合金、不锈钢 Main material:Aluminum alloy/stainless steel
表面处理:亮光、砂光、钛金 Finish:Polished/Satin/Titanium



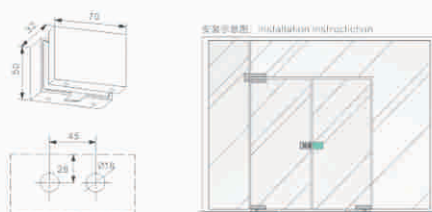
S-018

适合门厚:10-12mm Door thickness:10-12mm
主要材质:铝合金、不锈钢 Main material:Aluminum alloy/stainless steel
表面处理:亮光、砂光、钛金 Finish:Polished/Satin/Titanium



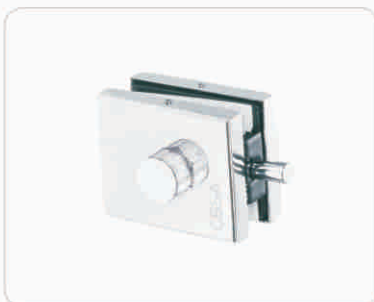
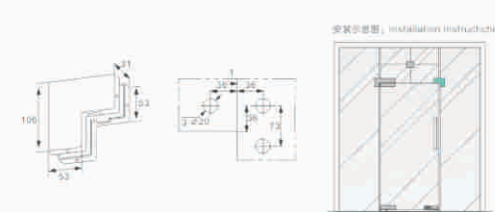
S-016

适合门厚:10-12mm Door thickness:10-12mm
主要材质:铝合金、不锈钢 Main material:Aluminum alloy/stainless steel
表面处理:亮光、砂光、钛金 Finish:Polished/Satin/Titanium



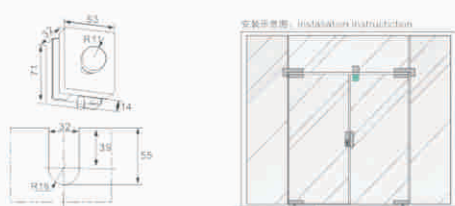
S-019

适合门厚:10-12mm Door thickness:10-12mm
主要材质:铝合金、不锈钢 Main material:Aluminum alloy/stainless steel
表面处理:亮光、砂光、钛金 Finish:Polished/Satin/Titanium



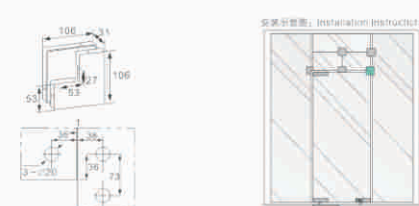
S-017

适合门厚:10-12mm Door thickness:10-12mm
主要材质:铝合金、不锈钢 Main material:Aluminum alloy/stainless steel
表面处理:亮光、砂光、钛金 Finish:Polished/Satin/Titanium



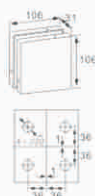
S-021

适合门厚:10-12mm Door thickness:10-12mm
主要材质:铝合金、不锈钢 Main material:Aluminum alloy/stainless steel
表面处理:亮光、砂光、钛金 Finish:Polished/Satin/Titanium



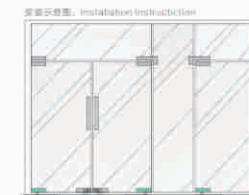
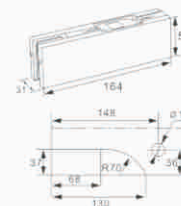
S-022

适合门厚:10-12mm Door thickness:10-12mm
 主要材质:铝合金、不锈钢 Main material:Aluminum alloy/stainless steel
 表面处理:亮光、砂光、钛金 Finish:Polished/Satin/Titanium



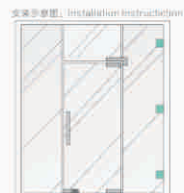
S-025

适合门厚:10-12mm Door thickness:10-12mm
 主要材质:铝合金、不锈钢 Main material:Aluminum alloy/stainless steel
 表面处理:亮光、砂光、钛金 Finish:Polished/Satin/Titanium



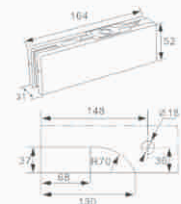
S-023

适合门厚:10-12mm Door thickness:10-12mm
 主要材质:铝合金、不锈钢 Main material:Aluminum alloy/stainless steel
 表面处理:亮光、砂光、钛金 Finish:Polished/Satin/Titanium



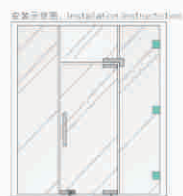
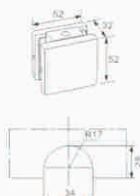
S-026

适合门厚:10-12mm Door thickness:10-12mm
 主要材质:铝合金、不锈钢 Main material:Aluminum alloy/stainless steel
 表面处理:亮光、砂光、钛金 Finish:Polished/Satin/Titanium



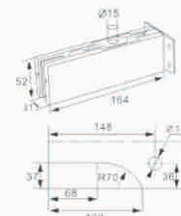
S-024

适合门厚:10-12mm Door thickness:10-12mm
 主要材质:铝合金、不锈钢 Main material:Aluminum alloy/stainless steel
 表面处理:亮光、砂光、钛金 Finish:Polished/Satin/Titanium



S-027

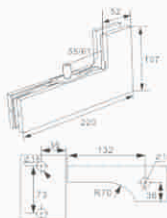
适合门厚:10-12mm Door thickness:10-12mm
 主要材质:铝合金、不锈钢 Main material:Aluminum alloy/stainless steel
 表面处理:亮光、砂光、钛金 Finish:Polished/Satin/Titanium



S-028

适合门厚:10-12mm
主要材质:铝合金、不锈钢
表面处理:亮光、砂光、钛金

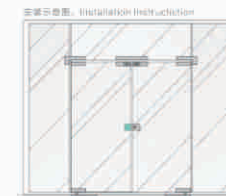
Door thickness:10-12mm
Main material:Aluminum alloy/stainless steel
Finish:Polished/Satin/Titanium



S-032

适合门厚:10-12mm
主要材质:铝合金、不锈钢
表面处理:亮光、砂光、钛金

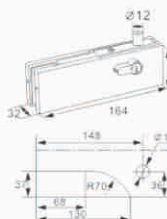
Door thickness:10-12mm
Main material:Aluminum alloy/stainless steel
Finish:Polished/Satin/Titanium



S-029

适合门厚:10-12mm
主要材质:铝合金、不锈钢
表面处理:亮光、砂光、钛金

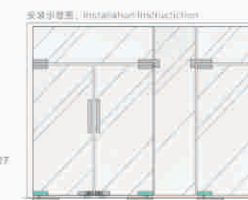
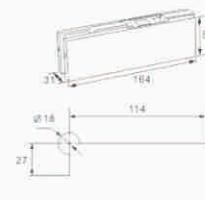
Door thickness:10-12mm
Main material:Aluminum alloy/stainless steel
Finish:Polished/Satin/Titanium



S-033

适合门厚:10-12mm
主要材质:铝合金、不锈钢
表面处理:亮光、砂光、钛金

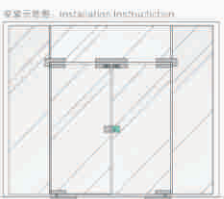
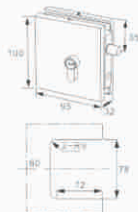
Door thickness:10-12mm
Main material:Aluminum alloy/stainless steel
Finish:Polished/Satin/Titanium



S-031

适合门厚:10-12mm
主要材质:铝合金、不锈钢
表面处理:亮光、砂光、钛金

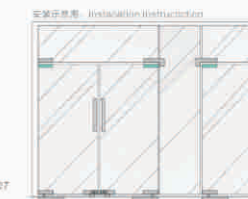
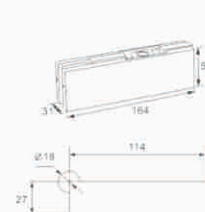
Door thickness:10-12mm
Main material:Aluminum alloy/stainless steel
Finish:Polished/Satin/Titanium



S-034

适合门厚:10-12mm
主要材质:铝合金、不锈钢
表面处理:亮光、砂光、钛金

Door thickness:10-12mm
Main material:Aluminum alloy/stainless steel
Finish:Polished/Satin/Titanium



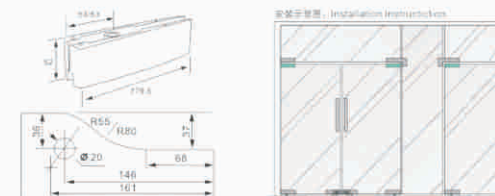
S-013

适合门厚:10-12mm Door thickness:10-12mm
主要材质:铝合金、不锈钢 Main material:Aluminum alloy/stainless steel
表面处理:亮光、砂光、钛金 Finish:Polished/Satin/Titanium



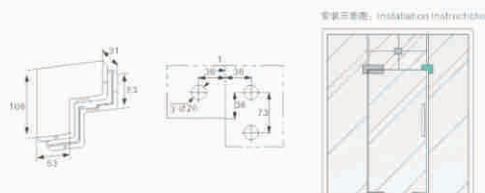
S-20

适合门厚:10-12mm Door thickness:10-12mm
主要材质:铝合金、不锈钢 Main material:Aluminum alloy/stainless steel
表面处理:亮光、砂光、钛金 Finish:Polished/Satin/Titanium



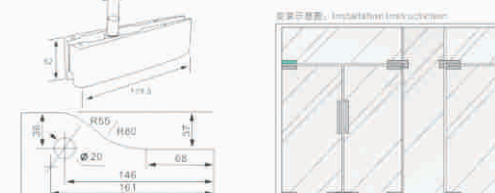
S-509

适合门厚:10-12mm Door thickness:10-12mm
主要材质:铝合金、不锈钢 Main material:Aluminum alloy/stainless steel
表面处理:亮光、砂光、钛金 Finish:Polished/Satin/Titanium



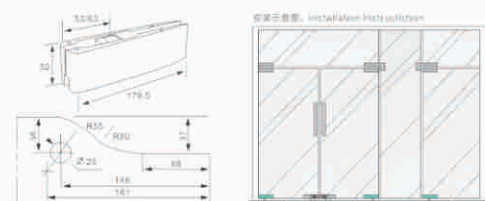
S-30

适合门厚:10-12mm Door thickness:10-12mm
主要材质:铝合金、不锈钢 Main material:Aluminum alloy/stainless steel
表面处理:亮光、砂光、钛金 Finish:Polished/Satin/Titanium



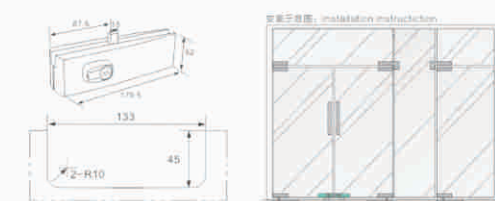
S-10

适合门厚:10-12mm Door thickness:10-12mm
主要材质:铝合金、不锈钢 Main material:Aluminum alloy/stainless steel
表面处理:亮光、砂光、钛金 Finish:Polished/Satin/Titanium



S-60

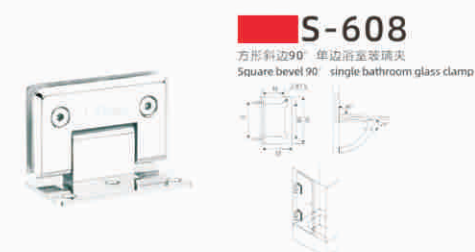
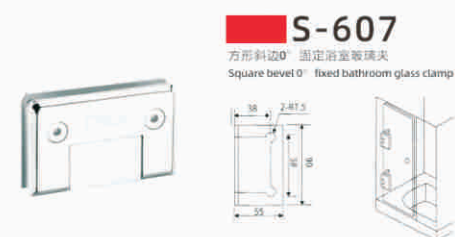
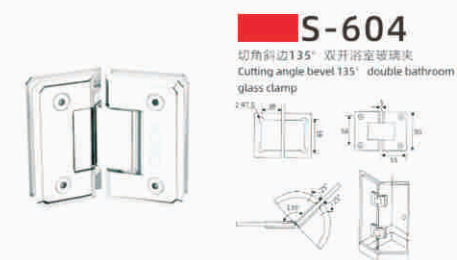
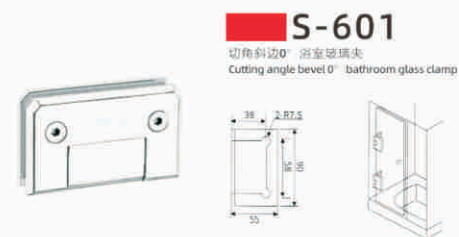
适合门厚:10-12mm Door thickness:10-12mm
主要材质:铝合金、不锈钢 Main material:Aluminum alloy/stainless steel
表面处理:亮光、砂光、钛金 Finish:Polished/Satin/Titanium



Bathroom Glass Clamps

Glass Hardware Products

CBSA

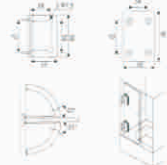


表面处理: 拉丝、镜光
适用厚度: 8-12mm钢化玻璃
材质: 不锈钢、黄铜、锌合金
特点: 门关至25° 时, 门会自动关闭

Finish: Satin, Polishing
Scope: 8-12mm toughened glass
Material: Stainless steel, Brass, Zinc alloy
Features: Upon turning door 25°, the door will close automatically

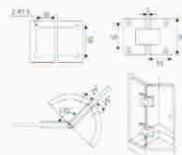
S-609

方形斜边90° 双边浴室玻璃夹
Square bevel 90° double bathroom glass clamp



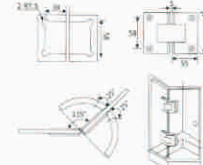
S-610

方形斜边135° 浴室玻璃夹
Square bevel 135° bathroom glass clamp



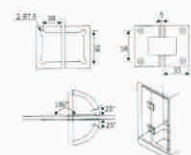
S-617

方形135° 浴室玻璃夹
Square 135° bathroom glass clamp



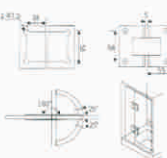
S-618

方形180° 浴室玻璃夹
Square 180° bathroom glass clamp



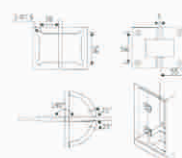
S-611

方形斜边180° 浴室玻璃夹
Square bevel 180° bathroom glass clamp



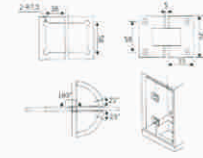
S-612

方形斜边180° 浴室玻璃夹
Square bevel 180° bathroom glass clamp



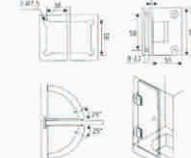
S-619

方形180° 浴室玻璃夹
Square 180° bathroom glass clamp



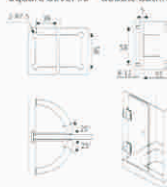
S-620

方形90° 双边浴室玻璃夹
Square 90° double bathroom glass clamp



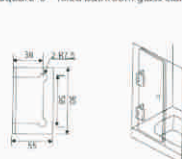
S-613

方形斜边90° 双边浴室玻璃夹
Square bevel 90° double bathroom glass clamp



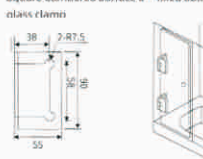
S-614

方形0° 固定浴室玻璃夹
Square 0° fixed bathroom glass clamp



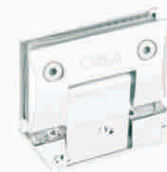
S-621

方形弧面0° 固定浴室玻璃夹
Square Cambered Surface 0° fixed bathroom glass clamp



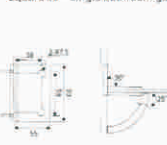
S-622

方形弧面90° 单边浴室玻璃夹
Square Cambered Surface 90° Single bathroom glass clamp



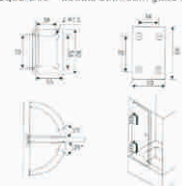
S-615

方形90° 单边浴室玻璃夹
Square 90° single bathroom glass clamp



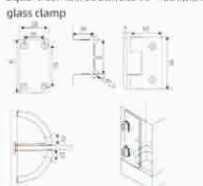
S-616

方形90° 双边浴室玻璃夹
Square 90° double bathroom glass clamp



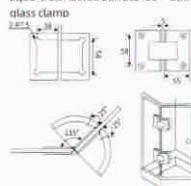
S-623

方形弧面90° 双边浴室玻璃夹
Square Cambered Surface 90° double bathroom glass clamp



S-624

方形弧面135° 浴室玻璃夹
Square Cambered Surface 135° bathroom glass clamp

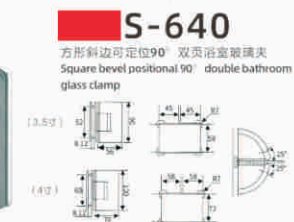
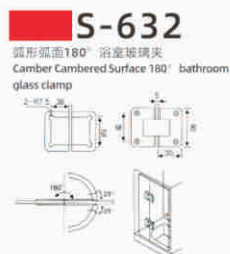
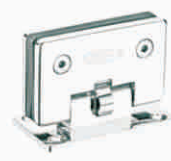


表面处理：拉丝、镜光
适用厚度：8-12mm钢化玻璃
材质：不锈钢、黄铜、锌合金
特点：门关至25° 时，门会自动关闭

Finish:Satin、Polishing
Scope:8-12mm toughened glass
Material:Stainless steel、Brass、Zinc alloy
Features:Upon turning door 25° ,the door will close automatically

表面处理：拉丝、镜光
适用厚度：8-12mm钢化玻璃
材质：不锈钢、黄铜、锌合金
特点：门关至25° 时，门会自动关闭

Finish:Satin、Polishing
Scope:8-12mm toughened glass
Material:Stainless steel、Brass、Zinc alloy
Features:Upon turning door 25° ,the door will close automatically



表面处理: 拉丝、镜光
适用厚度: 8-12mm钢化玻璃
材质: 不锈钢、黄铜、锌合金
特点: 门关至25° 时, 门会自动关闭

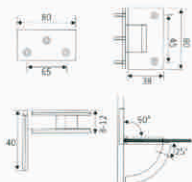
Finish: Satin, Polishing
Scope: 8-12mm toughened glass
Material: Stainless steel, Brass, Zinc alloy
Features: Upon turning door 25°, the door will close automatically

表面处理: 拉丝、镜光
适用厚度: 8-12mm钢化玻璃
材质: 不锈钢、黄铜、锌合金
特点: 门关至25° 时, 门会自动关闭

Finish: Satin, Polishing
Scope: 8-12mm toughened glass
Material: Stainless steel, Brass, Zinc alloy
Features: Upon turning door 25°, the door will close automatically

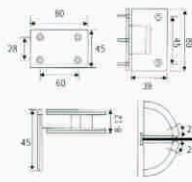
S-641

直边90° 单浴室玻璃夹
Straight edge 90° single bathroom glass clamp



S-642

直边90° 双浴室玻璃夹
Straight edge 90° double bathroom glass clamp



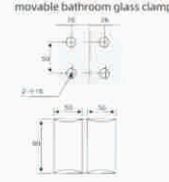
S-649

方形弧面90° 单边活动浴室玻璃夹
Square Cambered Surface 90° single movable bathroom glass clamp



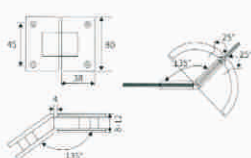
S-650

方形弧面180° 双边活动浴室玻璃夹
Square Cambered Surface 180° double movable bathroom glass clamp



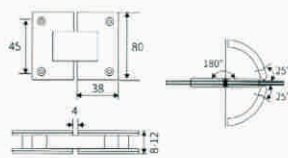
S-643

直边135° 双浴室玻璃夹
Straight edge 135° double bathroom glass clamp



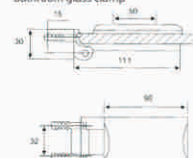
S-644

直边180° 双浴室玻璃夹
Straight edge 180° double bathroom glass clamp



S-651

长形弧面90° 单边活动浴室玻璃夹
Microscler Cambered Surface 90° single movable bathroom glass clamp



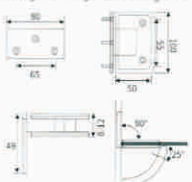
S-652

长形弧面180° 双边活动浴室玻璃夹
Microscler Cambered Surface 180° double movable bathroom glass clamp



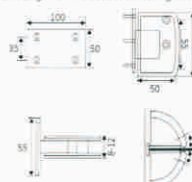
S-645

弧边90° 单浴室玻璃夹
Arc edge 90° single bathroom glass clamp



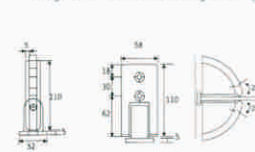
S-646

弧边90° 双浴室玻璃夹
Arc edge 90° double bathroom glass clamp



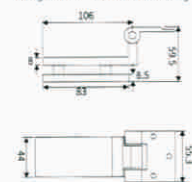
S-653

加长形90° 双浴室玻璃夹
Elongated 90° double bathroom glass clamp



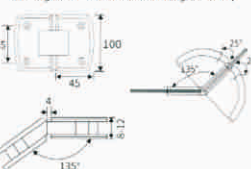
S-654

加长形90° 双浴室玻璃合页
Elongated 90° double bathroom glass hinge



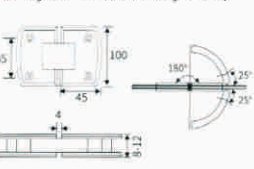
S-647

弧边135° 双浴室玻璃夹
Arc edge 135° double bathroom glass clamp



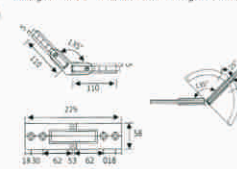
S-648

弧边180° 双浴室玻璃夹
Arc edge 180° double bathroom glass clamp



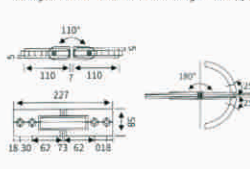
S-655

加长形135° 双浴室玻璃夹
Elongated 135° double bathroom glass clamp



S-656

加长形180° 双浴室玻璃夹
Elongated 180° double bathroom glass clamp



表面处理: 拉丝、镜光

适用厚度: 8-12mm钢化玻璃

材质: 不锈钢、黄铜、锌合金

特点: 门关至25° 时, 门会自动关闭

Finish: Satin, Polishing

Scope: 8-12mm toughened glass

Material: Stainless steel, Brass, Zinc alloy

Features: Upon turning door 25°, the door will close automatically

表面处理: 拉丝、镜光

适用厚度: 8-12mm钢化玻璃

材质: 不锈钢、黄铜、锌合金

特点: 门关至25° 时, 门会自动关闭

Finish: Satin, Polishing

Scope: 8-12mm toughened glass

Material: Stainless steel, Brass, Zinc alloy

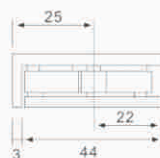
Features: Upon turning door 25°, the door will close automatically

玻璃隔断码系列 GLASS PARTITIONER SERIES



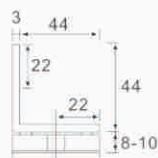
S-801

玻璃隔断码-直边
材质: 精铸不锈钢、锌合金、黄铜
表面处理: 亮光、砂光
适用范围: 适用于8-12mm厚钢化玻璃门
Glass partitioner(straight side)
Materials: Refined stainless steel, zinc alloy, brass
Finish: Light, Sand-polished
Available for: Suitable for 8-12 thickness toughened glass door



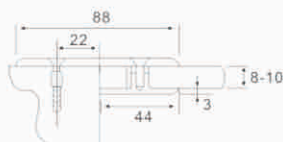
S-802

玻璃隔断码-90° 单
材质: 精铸不锈钢、锌合金、黄铜
表面处理: 亮光、砂光
适用范围: 适用于8-12mm厚钢化玻璃门
Glass partitioner(90°, one side)
Materials: Refined stainless steel, zinc alloy, brass
Finish: Light, Sand-polished
Available for: Suitable for 8-12 thickness toughened glass door



S-803

玻璃隔断码-180° 单
材质: 精铸不锈钢、锌合金、黄铜
表面处理: 亮光、砂光
适用范围: 适用于8-12mm厚钢化玻璃门
Glass partitioner(180°, one side)
Materials: Refined stainless steel, zinc alloy, brass
Finish: Light, Sand-polished
Available for: Suitable for 8-12 thickness toughened glass door



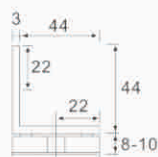
S-804

玻璃隔断码-直边
材质: 精铸不锈钢、锌合金、黄铜
表面处理: 亮光、砂光
适用范围: 适用于8-12mm厚钢化玻璃门
Glass partitioner(straight side)
Materials: Refined stainless steel, zinc alloy, brass
Finish: Light, Sand-polished
Available for: Suitable for 8-12 thickness toughened glass door



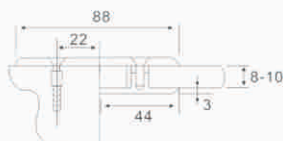
S-805

玻璃隔断码-直边
材质: 精铸不锈钢、锌合金、黄铜
表面处理: 亮光、砂光
适用范围: 适用于8-12mm厚钢化玻璃门
Glass partitioner(straight side)
Materials: Refined stainless steel, zinc alloy, brass
Finish: Light, Sand-polished
Available for: Suitable for 8-12 thickness toughened glass door



S-806

玻璃隔断码-直边
材质: 精铸不锈钢、锌合金、黄铜
表面处理: 亮光、砂光
适用范围: 适用于8-12mm厚钢化玻璃门
Glass partitioner(straight side)
Materials: Refined stainless steel, zinc alloy, brass
Finish: Light, Sand-polished
Available for: Suitable for 8-12 thickness toughened glass door



浴室玻璃夹连接件系列 BATHROOM GLASS CLAMP CONNECTOR SERIES



S-807
Connector
连接件



S-808
Connector
连接件



S-809
Connector
连接件



S-810
Connector
连接件



S-811
Connector
连接件

自动门夹系列 AUTOMATIC DOOR CLAMP SERIES



S-812
Automatic door clamp
自动门夹



S-813
Automatic door clamp
自动门夹



S-814
Automatic door clamp
自动门夹

吊轮道轨系列 HANGING TRACK SERIES



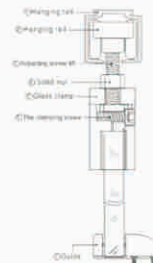
S-815
Hanging wheel
吊轮



S-816
Hanging wheel
吊轮



S-817
Hanging wheel
吊轮



S-818
Hanging wheel
吊轮



S-819
Hanging wheel
吊轮



S-820
Track
道轨



S-821
Track
道轨



S-822
Track
道轨



安装说明 Installation Notes

玻璃厚度: 8-10mm
Glass thickness: 8-10mm

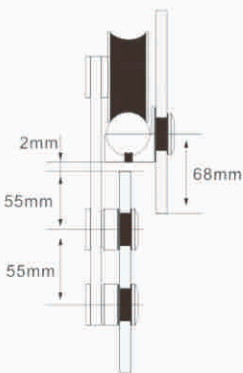
门最大重量: ≤65kg
Max door weight: ≤65kg

最大门宽: ≤1500mm
Max door width: ≤1500mm

门宽=门开宽度+80mm
Door width=Door opening width+80mm

门高=门开高度+30mm
Door height=Door opening height+30mm

型号 Model	名称 Name	整套数量 Complete quantity
S-701	吊臂	2 (pieces/个)
S-702	管夹	4 (pieces/个)
S-703(Left)	防撞(左)	1 (pieces/个)
S-703(Right)	防撞(右)	1 (pieces/个)
S-704	止摆器	1 (pieces/个)
S-705	管塞	2 (pieces/个)
S-706	工具	1 (Put/把)
S-707	小拉手	1 (pay/付)
S-708	轨道	1 (article/条)



移门安装侧视图
Sliding door installation side view

管夹位置说明 Pipe clamp position description

门移动长度 Door movement length	入口宽度 Entrance width	门宽 Door width
910-1010mm	910-1010mm	910-1010mm
1010-1110mm	1010-1110mm	1010-1110mm
1010-1210mm	1010-1210mm	1010-1210mm
1210-1310mm	1210-1310mm	1210-1310mm

注意: 管夹的安装位置, 80KG以下, 按门实际宽度的2/1位置, 80-120KG, 按门实际宽度的3/1位置, 120KG-150KG按门实际宽度的4/1位置

Note: The installation position of the pipe clamp is below 80KG, according to the actual width of the door 2/1 position, 80-120KG, according to the actual width of the door 3/1 position, 120KG-150KG according to the actual width of the door 4/1 position



安装说明 Installation Notes

玻璃厚度: 8-10mm
Glass thickness: 8-10mm

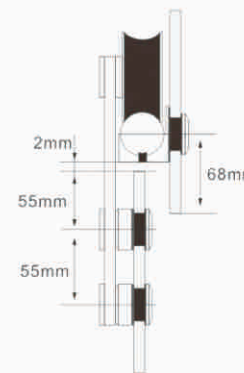
门最大重量: ≤65kg
Max door weight: ≤65kg

最大门宽: ≤1500mm
Max door width: ≤1500mm

门宽=门开宽度+80mm
Door width=Door opening width+80mm

门高=门开高度+30mm
Door height=Door opening height+30mm

型号 Model	名称 Name	整套数量 Complete quantity
S-709	吊臂	2 (pieces/个)
S-710	管夹	4 (pieces/个)
S-711(Left)	防撞(左)	1 (pieces/个)
S-712(Right)	防撞(右)	1 (pieces/个)
S-713	止摆器	1 (pieces/个)
S-714	管塞	2 (pieces/个)
S-715	小拉手	1 (pay/付)
S-716	工具	1 (Put/把)
S-717	轨道	1 (article/条)



移门安装侧视图
Sliding door installation side view

管夹位置说明 Pipe clamp position description

门移动长度 Door movement length	入口宽度 Entrance width	门宽 Door width
910-1010mm	910-1010mm	910-1010mm
1010-1110mm	1010-1110mm	1010-1110mm
1010-1210mm	1010-1210mm	1010-1210mm
1210-1310mm	1210-1310mm	1210-1310mm

注意: 管夹的安装位置, 80KG以下, 按门实际宽度的2/1位置, 80-120KG, 按门实际宽度的3/1位置, 120KG-150KG按门实际宽度的4/1位置

Note: The installation position of the pipe clamp is below 80KG, according to the actual width of the door 2/1 position, 80-120KG, according to the actual width of the door 3/1 position, 120KG-150KG according to the actual width of the door 4/1 position



安装说明 Installation Notes

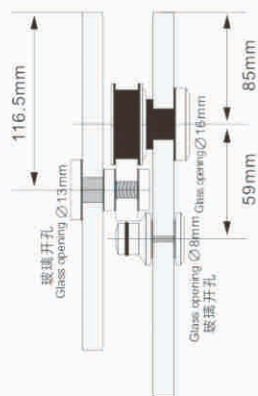
玻璃厚度: 8-10mm
Glass thickness: 8-10mm

门最大重量: ≤65kg
Max door weight: ≤65kg

180°最大安装长度为1.8米, 90°双开门
单边最大安装长度1.0米。
180° maximum installation length is 1.8 meters,
90° The double-opening door has a maximum
installation length of 1.0 m.

门宽=L/2+60mm
Door width = L / 2 + 60mm

门高=H-10mm
Door height = H - 10mm



移门安装侧视图
Sliding door installation side view



型号 Model	S-801	S-802	S-803(Left)	S-803(Right)	S-804	S-805	S-806	S-807	S-808
名称 Name	滑轮	防跳杆	定位器 (左)	定位器 (右)	小拉手	止摆器	管座	管夹	导轨
整套数量 Complete quantity	2 (pieces)	2 (pieces)	1 (pieces)	1 (pieces)	1 (pieces)	1 (pieces)	2 (Put)	2 (pay)	1 (article)



安装说明 Installation Notes

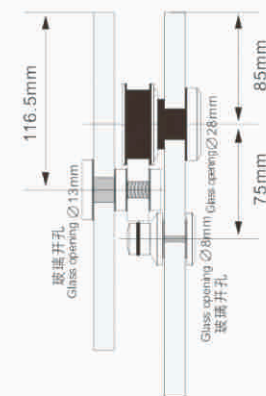
玻璃厚度: 8-10mm
Glass thickness: 8-10mm

门最大重量: ≤65kg
Max door weight: ≤65kg

180°最大安装长度为1.8米, 90°双开门
单边最大安装长度1.0米。
180° maximum installation length is 1.8 meters,
90° The double-opening door has a maximum
installation length of 1.0 m.

门宽=L/2+60mm
Door width = L / 2 + 60mm

门高=H-10mm
Door height = H - 10mm



移门安装侧视图
Sliding door installation side view



型号 Model	S-809	S-810	S-811(Left)	S-812(Right)	S-813	S-814	S-815	S-816	S-817	S-818
名称 Name	滑轮	防跳杆	定位器 (左)	定位器 (右)	小拉手	止摆器	管座	拼接器	导轨	固定管
整套数量 Complete quantity	2 (pieces)	2 (pieces)	1 (pieces)	1 (pieces)	1 (pieces)	1 (pieces)	2 (Put)	1 (pay)	1 (article)	1 (article)